

Certificate of Analysis

Prepared for:

Master Ind

Product Description: Hemp Large Orange Slices 30mg/unit LOS, DIS

Invoice Number: 2022-519.0

Lot Number: LOS-20022-B1

Manufacture Date: Jul 19, 2022

Product Code: LOS-30-DIS

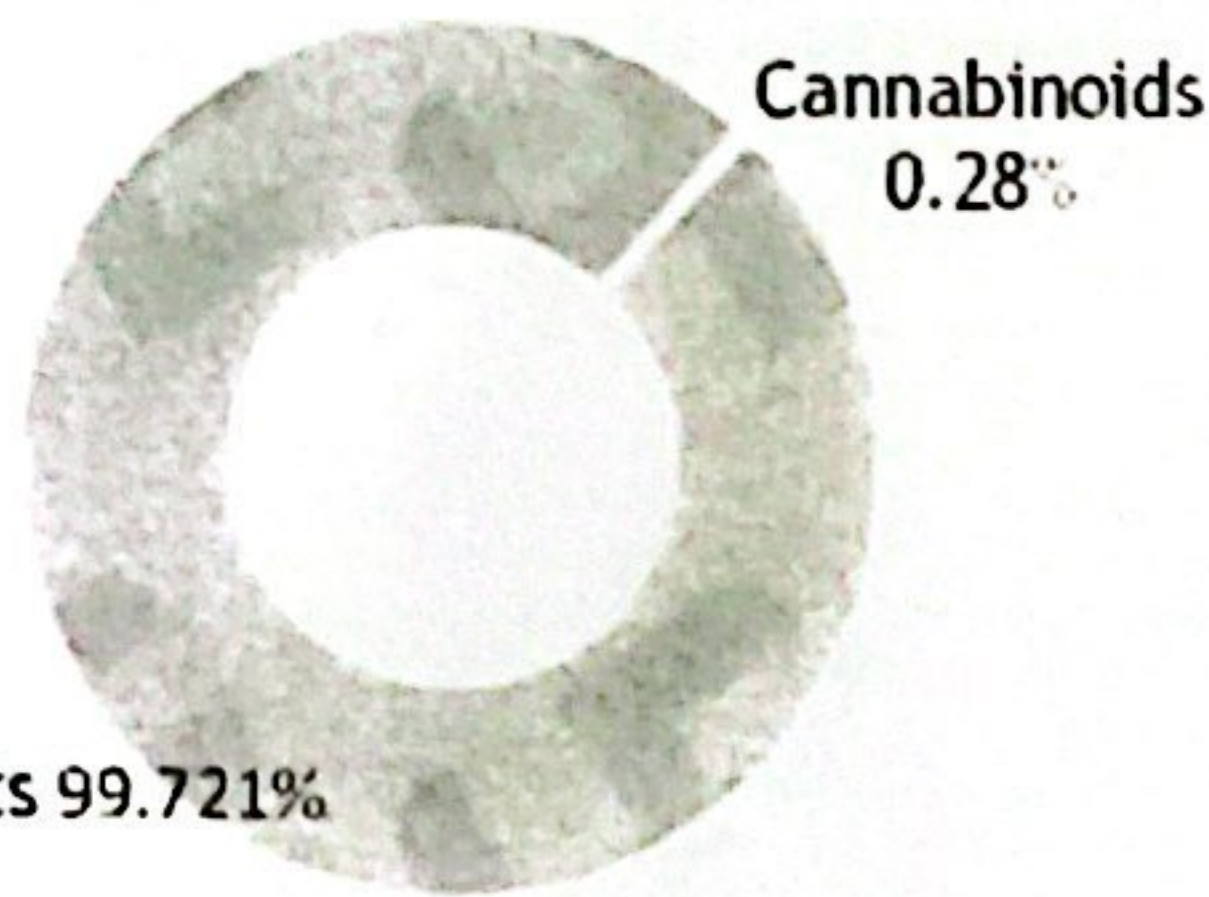
Date of Analysis: Jul 22, 2022

Best By Date: Jul 19, 2024

Cannabinoid Potency - Expected d9-THC: 30.00 mg/unit ± 10%

Unit Weight: ##### mg

% Total Cannabinoids

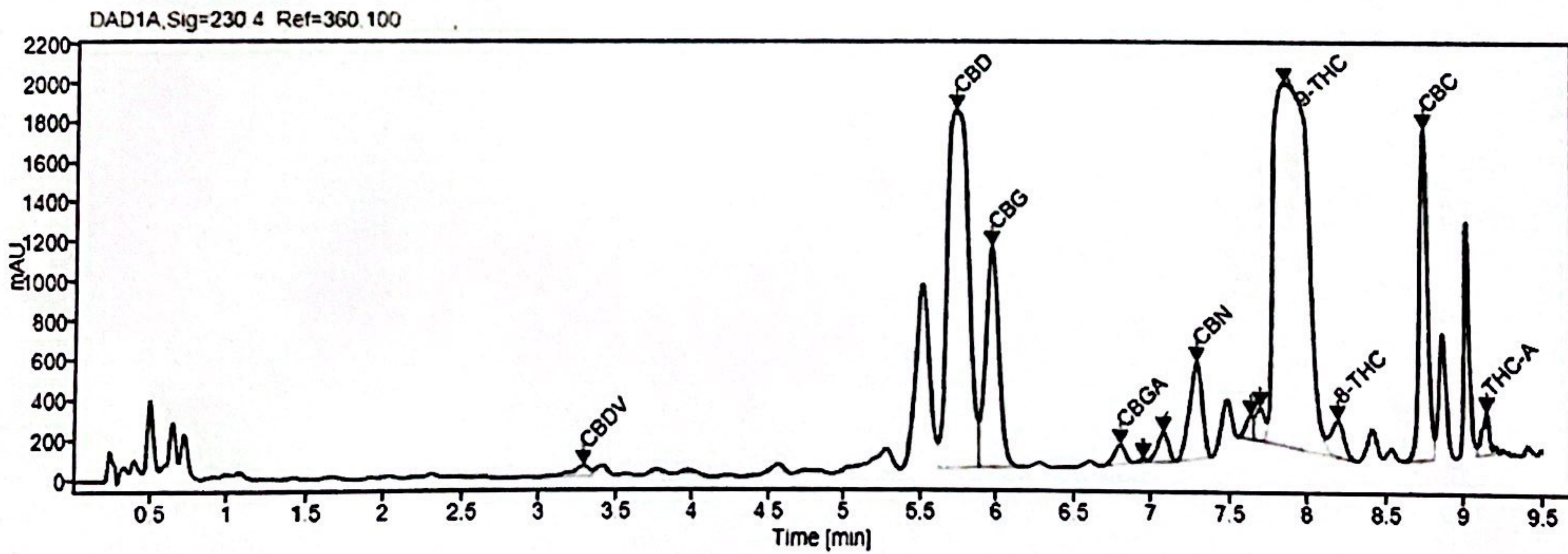


| | mg/g | % | LOQ (mg/g) |
|---------------|---------------|--------|--------------|
| Total CBD: | 6.02 mg/unit | 0.042% | 0.01 mg/unit |
| Total d9-THC: | 31.06 mg/unit | 0.217% | 0.01 mg/unit |
| CBD: | 0.42 mg/g | 0.042% | 0.01 mg/g |
| CBDa: | <LOD | <LOD | 0.01 mg/g |
| d9-THC: | 2.17 mg/g | 0.217% | 0.01 mg/g |
| CBC: | 0.04 mg/g | 0.004% | 0.01 mg/g |
| CBG: | 0.09 mg/g | 0.009% | 0.01 mg/g |
| CBGa: | 0.01 mg/g | 0.001% | 0.01 mg/g |
| CBN: | 0.02 mg/g | 0.002% | 0.01 mg/g |
| CBDV: | 0.01 mg/g | 0.001% | 0.01 mg/g |
| d8-THC: | 0.02 mg/g | 0.002% | 0.01 mg/g |
| THCa: | 0.01 mg/g | 0.001% | 0.01 mg/g |

*Total d9-THC and CBD are calculated taking into account the loss of a carboxyl group during decarboxylation. The formulas are as follows: d9-THC = d9THC + (THCa * (0.877)) CBD = CBD + (CBDa * (0.877))
 **Any compounds with results listed as "<LOD" were below the Limit of Detection and were not detected.
 ***LOQ is the limit of quantitation for any given analyte.

Density: N/A (kg/m3) Specific Gravity: N/A

Chromatogram

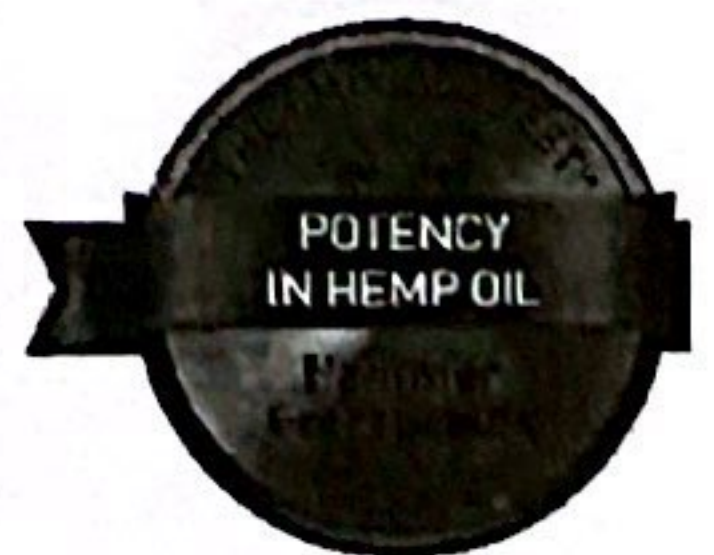
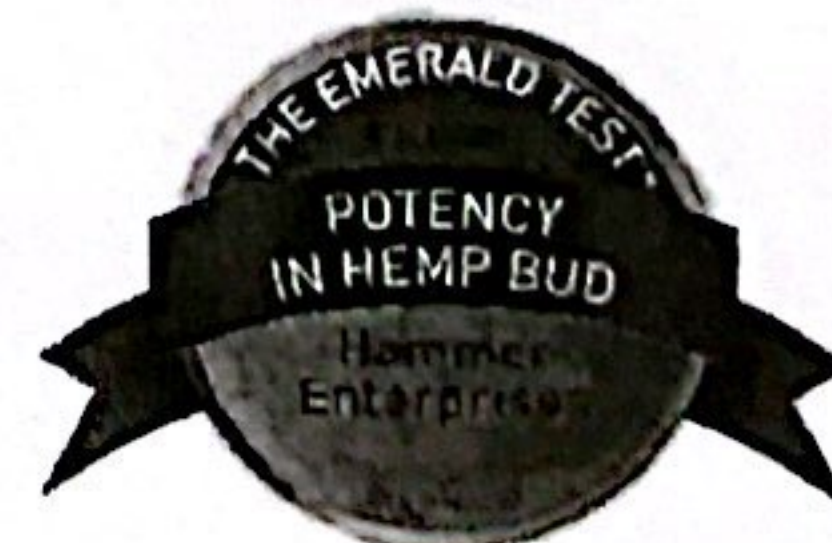


Prepared By: N. Stasi

Operations Manager
Jul 22, 2022

Reviewed By: E. Casey

Formulation and R&D Manager
Jul 22, 2022



Analyzed via HPLC Under These Conditions: Humidity: 30% Temperature: 70.0 °F

ISO 9001:2015 Certificate Number:

Certificate of Analysis test results are based only on the analysis of the product listed in the "Product Description" of this form. Hammer Enterprises, LLC, makes no claims as to the efficacy, safety, or other risks with any detected or non-detected compounds reported herein. All analyses conducted at Hammer Enterprises, LLC, is performed on well-maintained, quality instruments utilizing Good Laboratory Practices and methodology. This Certificate may not be reproduced except in full, without the written approval of Hammer Enterprises, LLC. **DISCLAIMER:** When reviewing certificate ensure watermark is complete. Watermark will present as repeating HE logos diagonally across the entire page. The authenticity of this document is not guaranteed if there is evident modification, blocking, or alterations of the watermark.